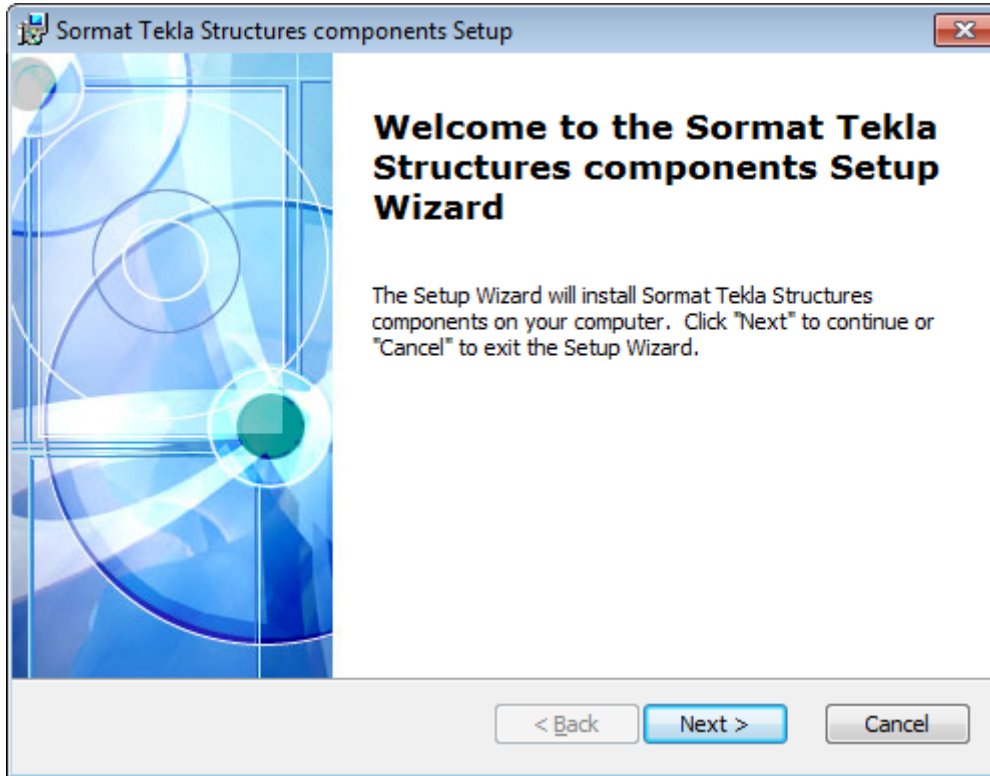


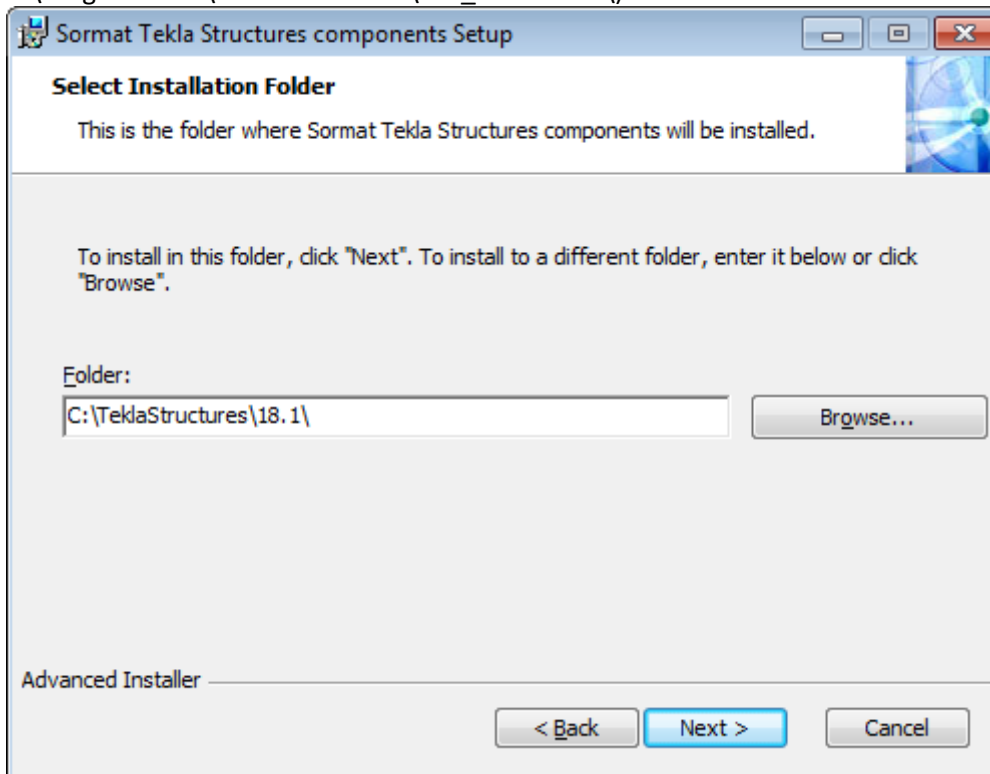
INSTALLATION WITH INSTALLER

Double click Sormat_components_18.1_older.msi to start installation.

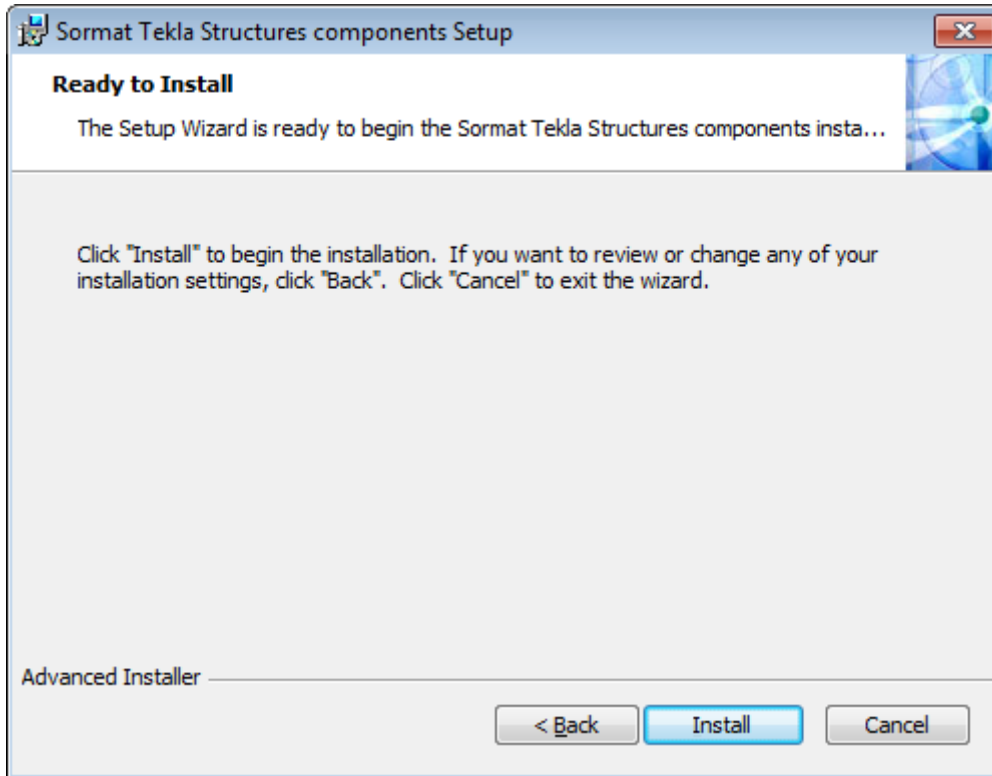
Welcome screen



Select installation folder (where Tekla Structures is installed, typically C:\TeklaStructures*TS_VERSION*\ or C:\Program Files\Tekla Structures*TS_VERSION *\)



Click Install- button



MANUAL INSTALLATION

Unpack the Sormat_components.zip. Copy files to folders:

Plugins:

Sormat_KEVA_VKS_VH.dll

*TS_INSTALL_DIR**TS_VERSION*\nt\bin\plugins\Sormat

Sormat_LA_LAL_LAH.dll

*TS_INSTALL_DIR**TS_VERSION*\nt\bin\plugins\Sormat

Sormat_Liebig_Anchor.dll

*TS_INSTALL_DIR**TS_VERSION*\nt\bin\plugins\Sormat

Sormat_MMS.dll

*TS_INSTALL_DIR**TS_VERSION*\nt\bin\plugins\Sormat

Sormat_PFG_Anchor.dll

*TS_INSTALL_DIR**TS_VERSION*\nt\bin\plugins\Sormat

Sormat_Safety_Bolt.dll

*TS_INSTALL_DIR**TS_VERSION*\nt\bin\plugins\Sormat

Sormat_S-KA_S-KAK_S-KAH.dll

*TS_INSTALL_DIR**TS_VERSION*\nt\bin\plugins\Sormat

Sormat_S-UF_UP.dll

*TS_INSTALL_DIR**TS_VERSION*\nt\bin\plugins\Sormat

Sormat_SUPERPLUS_BLS.dll

*TS_INSTALL_DIR**TS_VERSION*\nt\bin\plugins\Sormat

Help Files:

Sormat_KEVA_VKS_VH.chm	*TS_INSTALL_DIR**TS_VERSION*\nt\help\enu
Sormat_LA_LAL_LAH.chm	*TS_INSTALL_DIR**TS_VERSION*\nt\help\enu
Sormat_LIEBIG_ANCHOR.chm	*TS_INSTALL_DIR**TS_VERSION*\nt\help\enu
Sormat_MMS.chm	*TS_INSTALL_DIR**TS_VERSION*\nt\help\enu
Sormat_PFG_ANCHOR.chm	*TS_INSTALL_DIR**TS_VERSION*\nt\help\enu
Sormat_SAFETY_BOLT.chm	*TS_INSTALL_DIR**TS_VERSION*\nt\help\enu
Sormat_S-KA.chm	*TS_INSTALL_DIR**TS_VERSION*\nt\help\enu
Sormat_S-UF_UP.chm	*TS_INSTALL_DIR**TS_VERSION*\nt\help\enu
Sormat_SUPERPLUS.chm	*TS_INSTALL_DIR**TS_VERSION*\nt\help\enu

Bitmaps:

Sormat_logo.bmp	*TS_INSTALL_DIR**TS_VERSION*\nt\bitmaps
Sormat_KEVA_VKS_VH.bmp	*TS_INSTALL_DIR**TS_VERSION*\nt\bitmaps
Sormat_LA_LAL_LAH.bmp	*TS_INSTALL_DIR**TS_VERSION*\nt\bitmaps
Sormat_Liebig_Anchor.bmp	*TS_INSTALL_DIR**TS_VERSION*\nt\bitmaps
Sormat_MMS.bmp	*TS_INSTALL_DIR**TS_VERSION*\nt\bitmaps
Sormat_PFG_Anchor.bmp	*TS_INSTALL_DIR**TS_VERSION*\nt\bitmaps
Sormat_S_KA.bmp	*TS_INSTALL_DIR**TS_VERSION*\nt\bitmaps
Sormat_S_UF_UP.bmp	*TS_INSTALL_DIR**TS_VERSION*\nt\bitmaps
Sormat_Safety_Bolt.bmp	*TS_INSTALL_DIR**TS_VERSION*\nt\bitmaps
Sormat_Superplus.bmp	*TS_INSTALL_DIR**TS_VERSION*\nt\bitmaps
Sormat_SUPERPLUS_BLS.bmp	*TS_INSTALL_DIR**TS_VERSION*\nt\bitmaps
et_element_Sormat_KEVA_VKS_VH.bmp	*TS_INSTALL_DIR**TS_VERSION*\nt\bitmaps
et_element_Sormat_LA_LAL_LAH.bmp	*TS_INSTALL_DIR**TS_VERSION*\nt\bitmaps
et_element_Sormat_Liebig_Anchor.bmp	*TS_INSTALL_DIR**TS_VERSION*\nt\bitmaps
et_element_Sormat_MMS.bmp	*TS_INSTALL_DIR**TS_VERSION*\nt\bitmaps
et_element_Sormat_PFG_Anchor.bmp	*TS_INSTALL_DIR**TS_VERSION*\nt\bitmaps
et_element_Sormat_S_UF_UP.bmp	*TS_INSTALL_DIR**TS_VERSION*\nt\bitmaps
et_element_Sormat_Safety_Bolt.bmp	*TS_INSTALL_DIR**TS_VERSION*\nt\bitmaps
et_element_Sormat_S-KA_S-KAK_S-KAH.bmp	*TS_INSTALL_DIR**TS_VERSION*\nt\bitmaps
et_element_Sormat_SUPERPLUS_BLS.bmp	*TS_INSTALL_DIR**TS_VERSION*\nt\bitmaps

Report:

Sormat.rpt
*TS_INSTALL_DIR**TS_VERSION*\Environments\Common\system