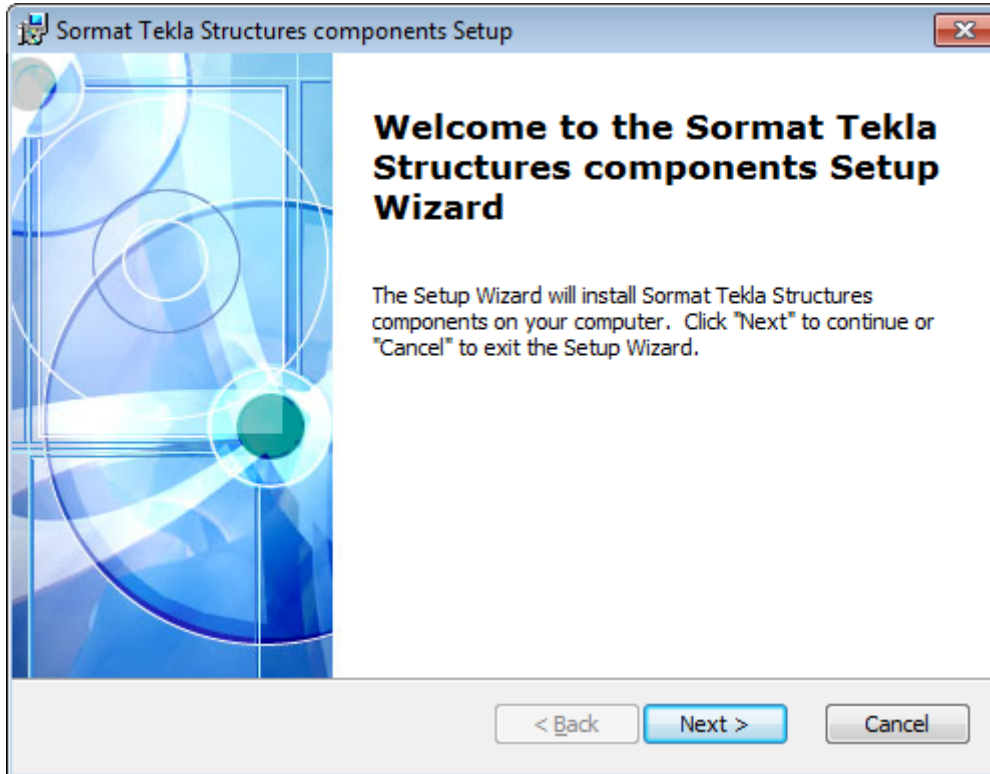


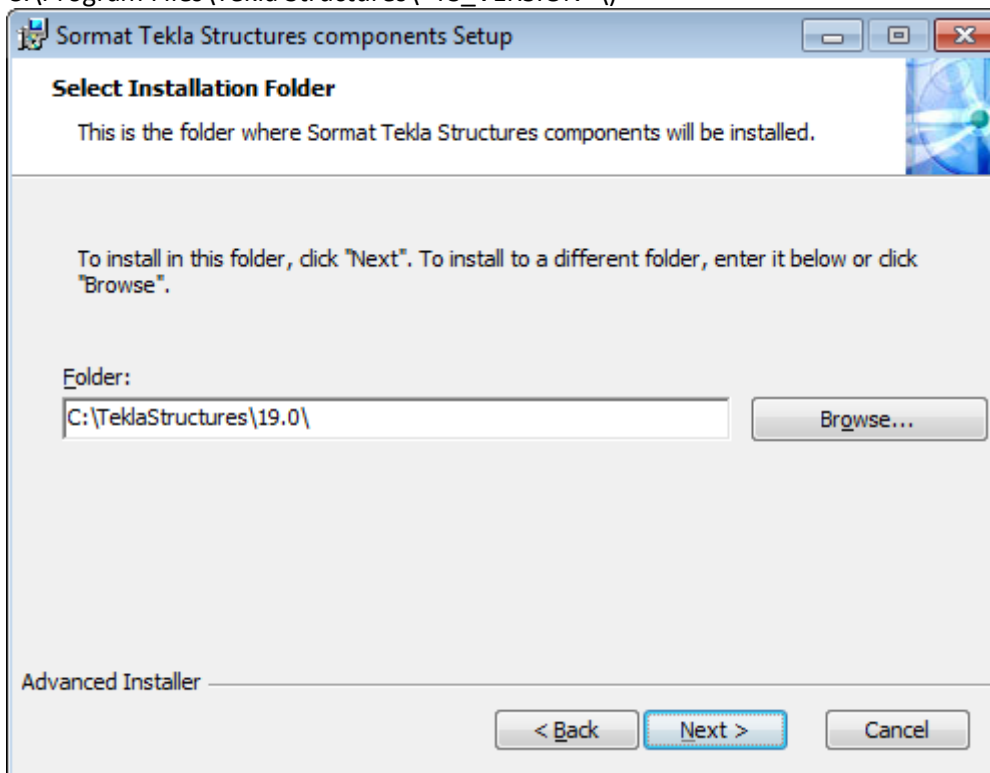
INSTALLATION WITH INSTALLER

Double click Sormat_components_19.0_newer.msi to start installation.

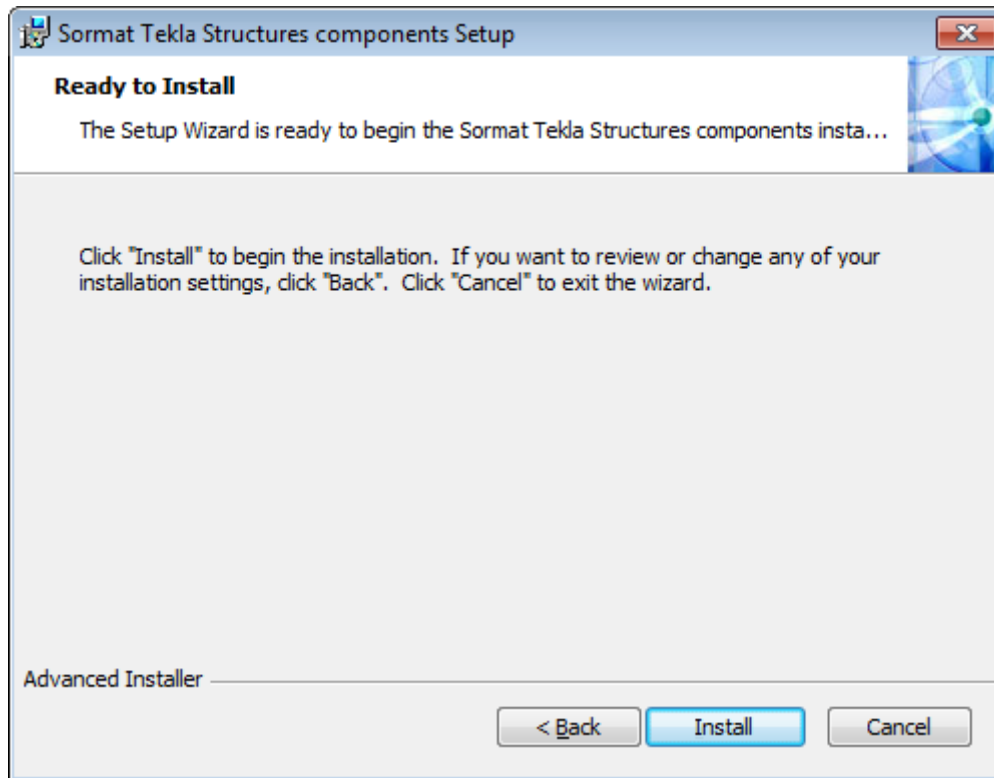
Welcome screen



Select installation folder (where Tekla Structures is installed, typically C:\TeklaStructures*TS_VERSION*\ or C:\Program Files\Tekla Structures*TS_VERSION*\)



Click Install- button



MANUAL INSTALLATION

Unpack the Sormat_components.zip. Copy files to folders:

Plugins:

Sormat_KEVA_VKS_VH.dll

*TS_INSTALL_DIR**TS_VERSION*\nt\bin\plugins\Sormat

Sormat_LA_LAL_LAH.dll

*TS_INSTALL_DIR**TS_VERSION*\nt\bin\plugins\Sormat

Sormat_Liebig_Anchor.dll

*TS_INSTALL_DIR**TS_VERSION*\nt\bin\plugins\Sormat

Sormat_MMS.dll

*TS_INSTALL_DIR**TS_VERSION*\nt\bin\plugins\Sormat

Sormat_PFG_Anchor.dll

*TS_INSTALL_DIR**TS_VERSION*\nt\bin\plugins\Sormat

Sormat_Safety_Bolt.dll

*TS_INSTALL_DIR**TS_VERSION*\nt\bin\plugins\Sormat

Sormat_S-KA_S-KAK_S-KAH.dll

*TS_INSTALL_DIR**TS_VERSION*\nt\bin\plugins\Sormat

Sormat_S-UF_UP.dll

*TS_INSTALL_DIR**TS_VERSION*\nt\bin\plugins\Sormat

Sormat_SUPERPLUS_BLS.dll

*TS_INSTALL_DIR**TS_VERSION*\nt\bin\plugins\Sormat

Help Files:

Sormat_KEVA_VKS_VH.chm
Sormat_LA_LAL_LAH.chm
Sormat_LIEBIG_ANCHOR.chm
Sormat_MMS.chm
Sormat_PFG_ANCHOR.chm
Sormat_SAFETY_BOLT.chm
Sormat_S-KA.chm
Sormat_S-UF_UP.chm
Sormat_SUPERPLUS.chm

*TS_INSTALL_DIR**TS_VERSION*\nt\help\enu
*TS_INSTALL_DIR**TS_VERSION*\nt\help\enu
*TS_INSTALL_DIR**TS_VERSION*\nt\help\enu
*TS_INSTALL_DIR**TS_VERSION*\nt\help\enu
*TS_INSTALL_DIR**TS_VERSION*\nt\help\enu
*TS_INSTALL_DIR**TS_VERSION*\nt\help\enu
*TS_INSTALL_DIR**TS_VERSION*\nt\help\enu
*TS_INSTALL_DIR**TS_VERSION*\nt\help\enu
*TS_INSTALL_DIR**TS_VERSION*\nt\help\enu

Bitmaps:

Sormat_logo.bmp
Sormat_KEVA_VKS_VH.bmp
Sormat_LA_LAL_LAH.bmp
Sormat_Liebig_Anchor.bmp
Sormat_MMS.bmp
Sormat_PFG_Anchor.bmp
Sormat_S_KA.bmp
Sormat_S_UF_UP.bmp
Sormat_Safety_Bolt.bmp
Sormat_Superplus.bmp
Sormat_SUPERPLUS_BLS.bmp
et_element_Sormat_KEVA_VKS_VH.bmp
et_element_Sormat_LA_LAL_LAH.bmp
et_element_Sormat_Liebig_Anchor.bmp
et_element_Sormat_MMS.bmp
et_element_Sormat_PFG_Anchor.bmp
et_element_Sormat_S_UF_UP.bmp
et_element_Sormat_Safety_Bolt.bmp
et_element_Sormat_S-KA_S-KAK_S-KAH.bmp
et_element_Sormat_SUPERPLUS_BLS.bmp

*TS_INSTALL_DIR**TS_VERSION*\bitmaps
*TS_INSTALL_DIR**TS_VERSION*\bitmaps
*TS_INSTALL_DIR**TS_VERSION*\bitmaps
*TS_INSTALL_DIR**TS_VERSION*\bitmaps
*TS_INSTALL_DIR**TS_VERSION*\bitmaps
*TS_INSTALL_DIR**TS_VERSION*\bitmaps
*TS_INSTALL_DIR**TS_VERSION*\bitmaps
*TS_INSTALL_DIR**TS_VERSION*\bitmaps
*TS_INSTALL_DIR**TS_VERSION*\bitmaps
*TS_INSTALL_DIR**TS_VERSION*\bitmaps
*TS_INSTALL_DIR**TS_VERSION*\bitmaps
*TS_INSTALL_DIR**TS_VERSION*\bitmaps
*TS_INSTALL_DIR**TS_VERSION*\bitmaps
*TS_INSTALL_DIR**TS_VERSION*\bitmaps
*TS_INSTALL_DIR**TS_VERSION*\bitmaps
*TS_INSTALL_DIR**TS_VERSION*\bitmaps
*TS_INSTALL_DIR**TS_VERSION*\bitmaps
*TS_INSTALL_DIR**TS_VERSION*\bitmaps
*TS_INSTALL_DIR**TS_VERSION*\bitmaps
*TS_INSTALL_DIR**TS_VERSION*\bitmaps

Report:

Sormat.rpt
*TS_INSTALL_DIR**TS_VERSION*\Environments\Common\system